

# EURO/CUT

## GUILLOTINE CUTTERS

EURO/CUT Guillotines are manufactured in Europe. Four models introduce a new level of strength and performance emphasizing operator safety, ergonomics and productivity. Mitsubishi PLC with intuitive touch screen controls, side tables, adjustable clamp pressure, false clamp, side tables and light curtains are all included as standard equipment. Whisper quiet operation makes these reliable models suitable for all environments.



### EURO/CUT 53 PRO E

### EURO/CUT 52 PRO H

EuroCut - Guillotine Cutters	Eurocut 53 Pro E	EuroCut 52 Pro H
Cutting Width	20.88"	20.49"
Cutting Depth	20.48"	20.48"
Cutting Height	2.36"	3.15"
Blade Drive	Mechanical	Hydraulic
Clamp Drive	Mechanical	Hydraulic
Backgauge	Fully Programmable via touch screen with accuracy 0.1mm	
Footclamp	No	No
Program Module	100 Programs / 100 Steps in each, touch screen*	
Smallest Cut / False Clamp	0.98" / 1.57"	0.98" / 1.57"
Air Table with Blower	No	No
Side Tables	Yes	Yes
Safety	CSA Certified, IR Safety Curtain on the front table, safety cover on the rear table, main switch, electronically controlled true two-hand operation, automatic blade and clamp return from every position.	
Net Weight	660 lbs	1012 lbs
Power Supply	240V / 60Hz / 15amp	240V / 60Hz / 15amp
Dimensions with Side Tables	60.67"L x 47.44"D x 49.25"H	61.59"L x 53.27"D x 49.25"H
Dimensions without Side Tables	33.09"L x 47.44"D x 49.25"H	34.01"L x 53.27"D x 49.25"H
Code	EGTT53ST	EGTT52ST

\* mm or inches, paper EJECT function, programming via cutting, business card cutting mode

MADE IN EUROPE



Grand Valley-Direct

EASTERN CANADA

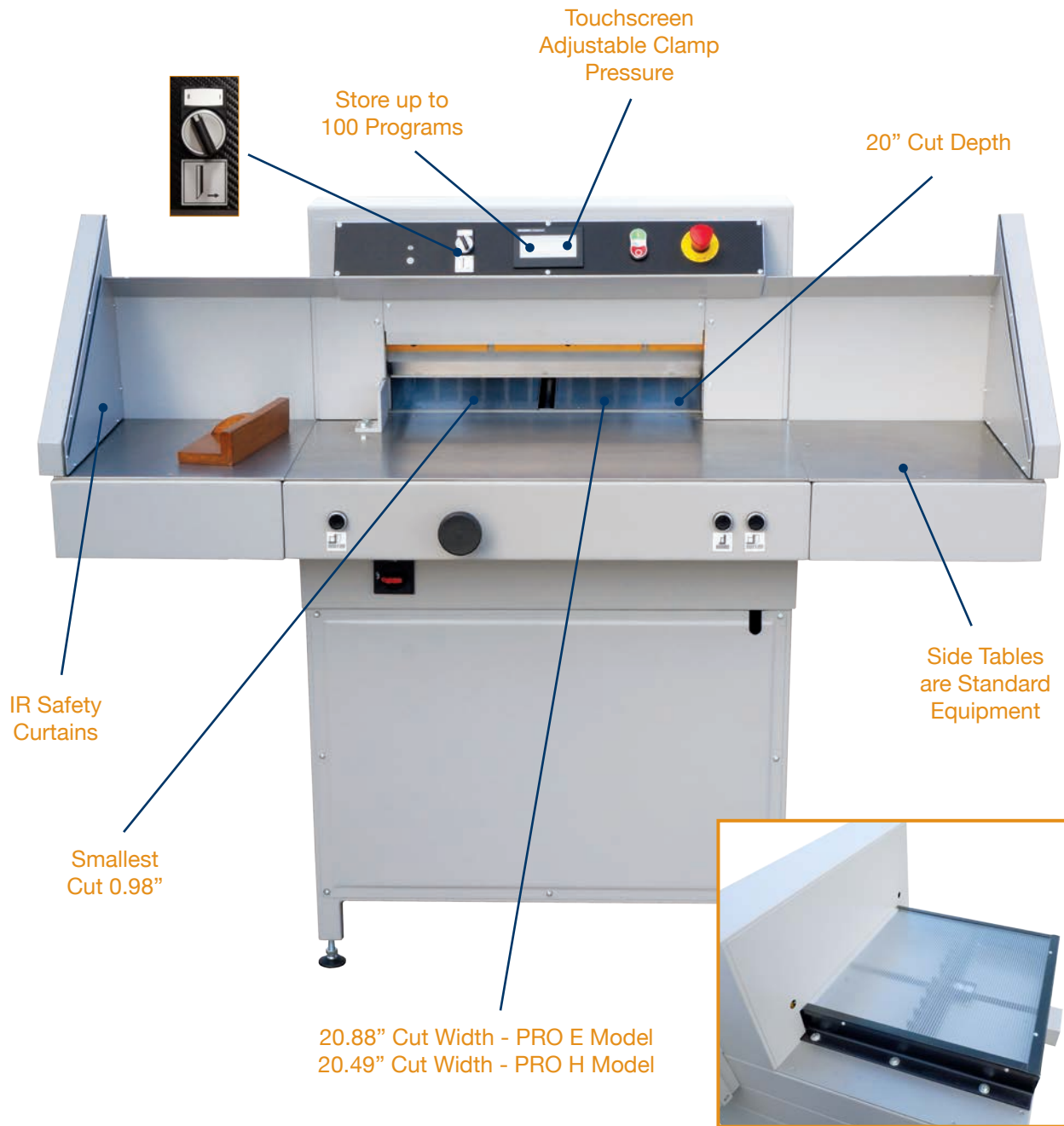
MEMBER OF THE INNOVÉ NETWORK

**innové**<sup>®</sup>  
GLOBAL SOLUTIONS

1.877.526.6848 | sales@gvdirect.ca | www.gvdirect.ca

# EURO CUT

## GUILLOTINE CUTTERS



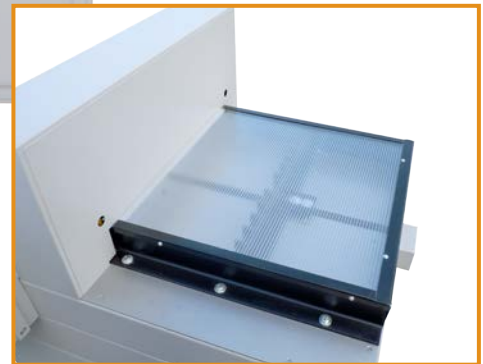
IR Safety  
Curtains

Smallest  
Cut 0.98"

20.88" Cut Width - PRO E Model  
20.49" Cut Width - PRO H Model

20" Cut Depth

Side Tables  
are Standard  
Equipment



VIEW FROM BACK



Grand Valley-Direct

EASTERN CANADA  
MEMBER OF THE INNOVÉ NETWORK

**innové**<sup>®</sup>  
GLOBAL SOLUTIONS

1.877.526.6848 | sales@gvdirect.ca | www.gvdirect.ca