

# RIGO E-CUT 550

Paper Cutting Machine

Available in  
Canada



NEMA 6-20  
20A 250V

**GVDIRECT™**  
Finish Well

GVDirect™ diligently works to ensure our performance lineup of laminate films, digital technologies, equipment, and all things finishing work for our customers to gain consumer attention and market share. GVDirect™ diligently endeavors to deliver value in service, product, and equipment that surpass market demands, support productivity, and uphold social and environmental integrity.

1.877.526.6848

[gvdirect.com](http://gvdirect.com)

# RIGO E-CUT 550

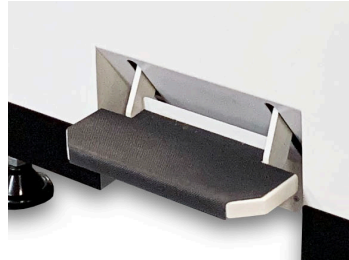
Made in  
Hungary



Our top selling digital sized cutting machine is built in Hungary at the renowned Rigo manufacturing plant. Omron PLC with advanced computing power allows for programmed cutting operations. Highly technical AC power drives sets these in a class of their own. Engineered with high strength welded steel and machined aluminum ensures the cutter is strong and accurate. Adjustable clamp pressure from the touch screen ensures every job is handled with the finest touch. Back gauge is equipped with double screw for the most accurate and stable back gauge in this category. Optical cutting line, false clamp and blade change tool kit included. Side tables can be removed for small work spaces.




**Robust back gauge**



**Foot Pedal**



**User Friendly Touch Screen**

	Specifications
Cutting Width	21.5"
Cutting Depth	20.87" (Minimum 1" with false clamp removed)
Pile Height	2 11/16"
Optical Cutting Line Display	Yes - Red Laser
Clamp	Automatic activation with cut buttons, manual activation with foot clamp pedal, clamp pressure adjustable from touch screen
Cutting Blade	Long-Life HSS Blade (Made in Germany) 
Touch Screen	Omron – programmable and manual back gauge operations. Multiple job memory.
Safety	Omron optical light curtain, two hand cut buttons with ergonomic design, safety cover on rear table, automatic blade and clamp return after each cut.
Power Supply	20 amp/208 volt/1 phase (Nema 6-20 plug)
Dimensions	33.5" width x 52" deep (57" width with side tables)
Weight	kg

Note: The information given above is believed to be true and accurate and is not intended to violate any statutory condition or right of a third party. GVDirect™ makes no warranty, express or implied, as to the fitness of the products for any specific use or purpose. The above data is purely for reader's consideration, investigation and verification.