



RoHS



UL-WTDP, CB-TMP Lab.



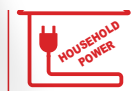
CE

QTOPIC-380F

QTOPIC-380F DUAL

QTOPIC-380F | Single side lamination, Sleeking jobs & Folding Feeder

QTOPIC-380F DUAL | Single side lamination, Embossing lamination,
Sleeking jobs & Folding Feeder



Using household power
supply (220~240V)

POD Semi-Automatic Thermal Laminators

- Foldable feeding table for convenient moving and minimizing space
- Selectable slope angles of feeding table as in 0° ,5° ,10° for smooth feeding
- Perfect lamination for wide range of lamination
 - POLYNEX(BOPP base) film, NYLONEX(NYLON base) film, PERFEX(PET base) film
- Space-effective compact design for office, copy shop & photo shop
- Automatic paper feeding gap control system and automatic burst cutting system
- Film tension control device and decurling device are equipped
- Capacitive touch screen
- Sleeking solution & MICRONEX lamination with re-winder unit
 - Gloss, Matt, Hologram, Metallic sleeking film, MICRONEX(overlay coating) laminating film
- Stronger motor used compared to QTOPIC-380 standard Model
- QTOPIC-380F has 50% increased roller pressure for perfect Laminating and Sleeking quality, compared to QTOPIC-380 standard model
- Additional pressing air cylinder of pull roller for perfect sleeking quality
- Air compressor included



Patents for QTOPIC 380F

- The method of forming embossing pattern by heating press mold partially on the printing surface laminated with thermal laminate film
- The method of elevating quality of printed matter by after-treatments including gloss and non-gloss processing
- Automatic feeding paper gap control

POD ROLL LAMINATORS

QTOPIC-380F Series

QTOPIC- 380F Series



www.gmp.com

POD ROLL LAMINATOR

Features

- Exchangeable/Commonized PCB
- Semi-automatic feeding paper gap control
- Air compressor (with light weight & lower noise) is placed inside the body
- Strengthened laminating pressure for more stepped-up bonding power effecting perfect quality of output
- Ergonomic touch screen for enhancing operator-centric convenient control & quality productivity
- Cantilever type film shaft for easy film loading

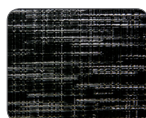
Application

- Poster, pop sign, menu
- Book cover & jacket
- Photo graph & album
- Name card
- Gift certificate
- Label (Micronex Lamination)
- Greeting Cards / Year book



Wrapless module (option)

Basic patterns of embossing roller (option)



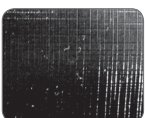
Fine Texture



Leather Texture



Sparkler Texture



Silky Texture



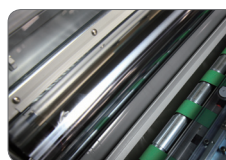
Linen Texture



Foldable feeding table



Top film perforator (option)



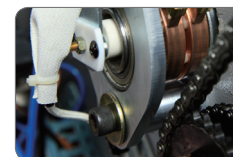
High glossy chrome roller



Automatic feeding gap control device



Capacitive touch screen



Thermo-couple inserted in the roller shell for temp. sensing



In-line perforator



Decurling device



Air cooling system (DUAL)



Air Compressor

Model Name	QTOPIC-380F		QTOPIC-380F DUAL	
Dimension (W*L*H)	720*900*1350mm (folded)		720*1000*1350mm (folded)	
Laminating speed	1.5m/min ~ 10m/min		1.5m/min ~ 10m/min	
Paper size (W*L)	Max.	380*500mm (option: 1200mm)	Max.	380*500mm (option: 1200mm)
	Min.	180*210mm	Min.	180*210mm
Laminating films	• Single Side: – POLYNEX (20~43mic) – PERFEX (25mic) – NYLONEX (27~44mic) • MICRONEX: – Gloss, Matt, Hologram		• Single Side: – POLYNEX (20~43mic) – PERFEX (25mic) – NYLONEX (27~44mic) • MICRONEX: – Gloss, Matt, Hologram	
Sleeking	Gloss, Matt, Hologram, Metallic		Gloss, Matt, Hologram, Metallic	
Substrate thickness	120~350g/m ²		120~350g/m ²	
Front roller diameter	Top	high glossy chrome ø 100	Top	high glossy chrome ø 100
	Bottom	silicon ø 80	Bottom	silicon ø 80
Rear roller diameter	silicon ø 55		silicon ø 55	
Power requirement	AC 220~240V, 50/60Hz, 9A		AC 220~240V, 50/60Hz, 9A	
Power consumption	2,000W		2,000W	
Warm-up time	5 min.		5 min.	
Heating system	INFRARED HEATER		INFRARED HEATER	
Laminating temp.	MAX.135°C		MAX.135°C	
Temp. control	Capacitive touch screen		Capacitive touch screen	
Speed control	Capacitive touch screen		Capacitive touch screen	
Display system	LCD Panel		LCD Panel	
Pressure control	Pneumatic cylinder		Pneumatic cylinder	
Film core size	77mm (3") / Dual – 58mm, 50mm		77mm (3") / Dual – 58mm, 50mm	
Air compressor	1 HP, 89L/min		1 HP, 89L/min	
Temp. sensing method	Thermo-couple inserted in the roller shell		Thermo-couple inserted in the roller shell	

※ GMP reserves the right to change specifications without prior notice.