

PROTOPIC III-540 Series

540

540 DUAL

540 DUAL PHOTO

540 DUPLEX



Patented

Patents for PROTOPIC II-540 Series

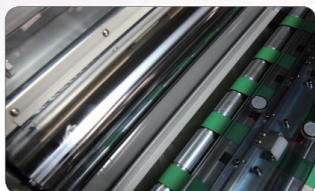
- ▶ The method to form embossing pattern
- ▶ Film roll holder for laminators
- ▶ Laminator equipped with embossing roller
- ▶ Rotation- Fine-Bar Decurling Device



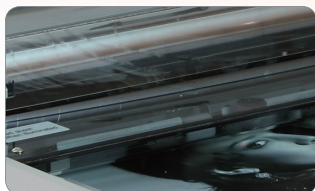
230V/15A
Household
Power

Key features of PROTOPIC III-540 series

- * Exchangeable/Commonized PCB
- * Automatic feeding paper gap adjustment
- * Slide type paper plate - easy to feed the papers
- * Air compressor (with light weight & lower noise) also can be placed in the lami-table for films & consumables
- * Upgraded Rotation- Fine-Bar Decurling Device as auto center-position mechanism with the high performances
- * Strengthened laminating pressure for more stepped-up bonding power effecting perfect output quality
- * Ergonomic touch screen for enhancing operator-centric convenient control & quality output productivity
- * Air cooling system for perfect Photo matting effect (for DUAL PHOTO version)



High glossy chrome roller



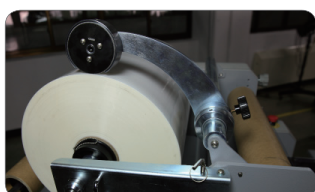
Automatic feeding gap adjustable device



Roller temperature sensor



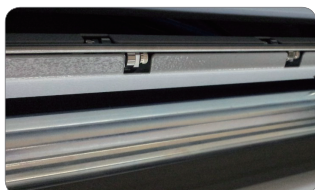
Touch panel



Film perforator



In-line perforator



Decurling device



Cantilever type film shaft



Air cooling system



Air Compressor

Specifications of each PROTOPIC III-540 series

	PROTOPIC III-540	PROTOPIC III-540 DUAL	PROTOPIC III-540 DUAL PHOTO	PROTOPIC III-540 DUPLEX
Model name				
Dimension (W*L*H, mm)	800*1580*670	800*1770*670	800*1770*670	800*1580*670
Net weight (kgs)	358	397	397	450
Laminating speed (m/min.)	15	15	15	15(5)
Max. Paper size (W*L, mm)	540*800	540*800	540*800	540*800
Laminating films	· Single Side : POLYNEX, PERFEX, NYLONEX · Sleeking foil : GLOSS, MATT, HOLOGRAM, METALLIC	Single Side: POLYNEX, PERFEX, NYLONEX FILM	Single Side: POLYNEX, PERFEX, NYLONEX FILM	· Single Side: POLYNEX, PERFEX, NYLONEX · Double Side: POLYNEX, PERFEX, NYLONEX
Substrate weight (g/m ²)	120~350	120~350	120~350	120~350
Front roller diameter (mm)	T: 100 / B: 80	T: 100 / B: 80	T: 100 / B: 80	T: 100 / B: 80
Rear roller diameter (mm)	55	55	55	55
Power requirement	AC 220~240V/12A	AC 220~240V/15A	AC 220~240V/15A	AC 220~240V/24A(15)
Power consumption (kw)	2.8	3.45	3.45	5.6(3.45)
Warm-up time (min)	7	7	7	7
Heating system	Infrared heater	Infrared heater	Infrared heater	Infrared heater
Laminating temp. (°C)	MAX,150	MAX,150	MAX,150	MAX,150
Temp. Control	Jog Dial	Jog Dial	Jog Dial	Jog Dial
Speed control	Jog Dial	Jog Dial	Jog Dial	Jog Dial
Display for temp. & Speed	LCD Panel	LCD Panel	LCD Panel	LCD Panel
Pressure control	Pneumatic cylinder	Pneumatic cylinder	Pneumatic cylinder	Pneumatic cylinder
Film core	77mm (3")	77mm (3")	77mm (3")	77mm (3")
Cooling device	Air blower	Air blower	Air cooling system	Air blower
Air compressor	1 HP, 89L/min	1 HP, 89L/min	1 HP, 89L/min 2 HP, 116L/min(cooling)	1 HP, 89L/min